



SUPER DRILLING

Driven By Innovation



COMPANY OVERVIEW

Super Drilling Private Limited is an ISO 9001:2008 certified company, which was established in 1987 in New Delhi, India. We are a specialist contractor in the ground engineering space (ground stabilization and ground anchors) and the utilities space (trenchless pipe laying of oil, water, gas, sewage, and electricity lines, and we also manufacture equipment to support delivery infrastructure).

Super Drilling operates pan India and internationally, and provides a gamut of services including Horizontal Directional Drilling/HDD/Directional Boring, Pipe Jacking, Diamond Drilling, Destructive Rock Drilling, Dewatering, Pipe Bursting, Pneumatic Moling, Concrete Core Cutting, Cementitious Grouting, Water Well/Tube Well Drilling, Micro Tunneling, Ground Anchors, Piling and Recharge Wells.

These services cater to and provide support in the implementation of projects across numerous industries. The core industries we operate in are Water Resources, Telecom, Drainage Systems, Electricity, City Gas Distribution, Civil Construction, Metro Construction, Railways, Hydel Power and Oil and Gas. Besides these industries, our services can be utilized in a number of other areas as well.

We are known for quality work and timely delivery of projects, while adhering to international standards of safety.

MISSION

To provide our employees with an honest, helpful and safe working environment, where every employee (individually and collectively) can dedicate himself/herself to providing our customers the highest levels of quality construction services at competitive prices.

To provide an effective and innovative approach to timely delivery of projects of our clients, in turn helping them provide the best possible service.

To become partners in progress with our clients.

To maintain the highest levels of professionalism, integrity, honesty and fairness in our relationship with our clients, vendors, sub-contractors and customers.

VISION

We are committed to providing quality services to improve and develop the overall infrastructure of various utilities across countries. We hope to support and help companies provide essential services to the common man.

It is our responsibility to continually develop, and tap into, the potential of our employees. We are focused not only on the growth of Super Drilling as a company but also on the growth and success of everyone associated with us.

OUR SERVICES

Super Drilling offers a gamut of services that cater to a very diverse range of industries.

Below is a glimpse of the services we provide and what industries they can be utilized in.

HORIZONTAL DIRECTIONAL DRILLING OR HDD,

also known as Directional boring, is a

steerable trenchless method of installing underground pipes, conduits and cables in a shallow arc along a prescribed bore path by using a surface-launched drilling rig, with minimal impact on the surrounding area.

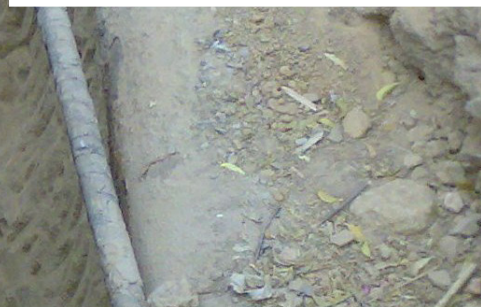
Industries that extensively use this service are Oil and Gas, Telecommunications, Electrical and Water Utilities.



SUPER DRILLING

PIPE JACKING is a method of laying specifically designed underground pipes without digging a trench. The pipes are assembled in an access shaft and then pushed into position by a hydraulic jack.

Industries that extensively use this service are Sewer Construction and Drainage Systems, Water Resources, Telecommunications, Metro and Subway Construction, and Electricity.



DIAMOND DRILLING is a form of exploration drilling that produces a core sample that is extracted for examination.

Industries that extensively use this service are Civil engineering, Mining and Mineral Exploration.





DEWATERING is a method of removal of groundwater or surface water from a riverbed, construction site, caisson, or mine shaft, by pumping. It is executed before subsurface excavation for foundations, shoring, or cellar space to lower the water table, and involves the use of submersible “dewatering” pumps, centrifugal pumps or application of vacuum to well points.

Industries that extensively use this service are Infrastructure Construction Segments.



SUPER DRILLING

PIPE BURSTING is a trenchless method of replacing old, damaged, worn out, buried pipelines (such as sewer, water, or natural gas pipes) without actually digging a trench. Bursting and splitting by using the existing alignment to replace a pipe avoids the need to secure additional right-of-way to install the replacement pipe. Bursting and splitting can be used to upsize the pipeline increasing its flow capacity.

Industries that extensively use this service are Oil and gas, Drainage and Sewer Systems and Water Resources.



SUPER DRILLING



PNEUMATIC MOLING also known as Impact Moling, is a trenchless method used for pipe/cable laying. A self-propelled pneumatic hammer is used to drill through and cover short distances, without digging an actual trench.

Industries that extensively use this service are Oil and Gas, Water Resources, Drainage and Sewer Systems, and Irrigation Systems.

CORE DRILLING is a process of boring holes through concrete, reinforced concrete, brick, block, stone and masonry, which is executed when a material sample is required or access through concrete is required.

Industries that extensively use this service are Mineral Exploration and Civil Construction.



SUPER DRILLING

GROUTING is the process of injecting cement or relevant chemicals into the substrate, to fill voids. Grouting is used for soil stabilization, treatment of leakages inside tunnels and for strengthening soil bearing capacity. Different methods include Curtain Grouting, Consolidation Grouting, Permeation Grouting and TAM Grouting.

Industries that extensively use this service are Infrastructure Construction and Mining.



**MICRO TUNNELING
(OR MICRO
TUNNELLING)** is a
technique used to
construct small tunnels.

Industries that
extensively use this
service are Telecom, Oil
and Gas and Utilities





TUBE WELL OR WATER WELL DRILLING is the process of drilling a deep hole or shaft, by driving a tube into the earth to a stratum that bears water.

Industries that extensively use this service are Water Resources and Irrigation.



RECHARGE WELL is the exact opposite of a conventional well. It pushes the surface water back into the groundwater system.

Industries that extensively use this service are Waste Water Management, Environmental Remediation, and Oil and Gas.



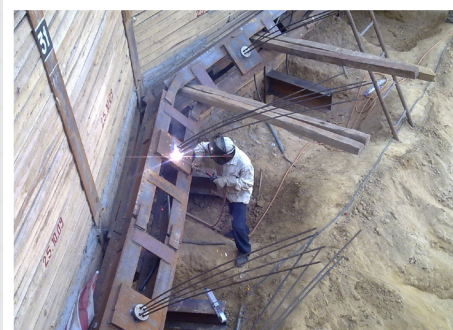
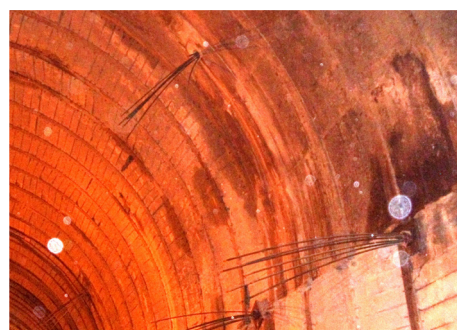
DESTRUCTIVE DRILLING, also known as DTH Drilling, is a method in which hammer blows are transmitted by the drill rods to the drill bit. It may be by wet percussion method, direct to hammer method or rotary method.

Industries that extensively use this service are Civil Engineering and Mineral Exploration.



GROUND ANCHOR is a device that is designed to support structures and is used in geotechnical and construction applications. It can be referred to as a percussion driven earth anchor or mechanical anchor.

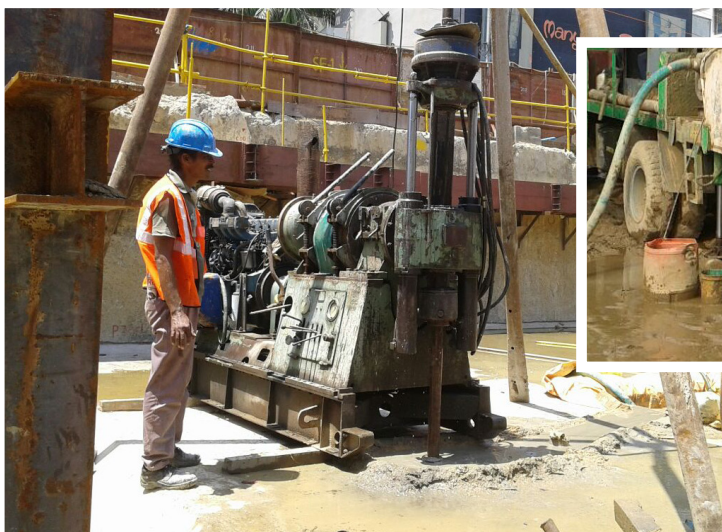
Industries that extensively use this service are Civil Engineering and Construction.



PILES (PILING) are made of steel and concrete members that are fastened together, end to end, to form a single pile. It is a combination of different materials or different shaped materials such as pipes and H-beams or steel and concrete. There are different types of piles such as

- Micro piles, also called mini piles, are often used for underpinning. They are used to create foundations for a variety of project types, including highway, bridge and transmission tower projects.
 - Sheet piles are used to restrain soft soil above the bedrock in this excavation. Sheet piling is a form of driven piling using thin interlocking sheets of steel to obtain a continuous barrier in the ground.
 - Soldier piles, also known as king piles or Berlin Walls, are constructed of wide flange steel H sections spaced about 2 to 3 metres apart and are driven prior to excavation. As the excavation proceeds,
- horizontal timber sheeting (lagging) is inserted behind the H pile flanges.
- King Post is a vertical supporting post, which is mainly used for the preparation of site for underground construction. King Post is also used in the construction of roof for the surface while underground construction is continued.
 - Toe Pin is a vertical support of shuttering of the soil to strengthen the shuttering in order to prevent soil displacement during deep excavation while construction work continues. This is very useful in the construction of bridges and underground civil construction; where deep excavation is to be carried out.
 - Shear Pin is used for prevention of damage from overload or load displacement.

Industries that extensively use this service are Foundation, Ground and Civil Engineering.



CLIENTS



JAIPUR VIDYUT VITRAN NIGAM LIMITED
(Rajasthan Government Undertaking)
Registered Office: "Vidyut Bhawan", Jyoti Nagar, Jaipur-302005



SAFETY AND ENVIRONMENTAL POLICY

- Super Drilling is committed to occupational health, safety and environmental (OHS&E) quality and training policies that will improve working efficiency, prevent any injuries to employees or damage to the environment.
- Super Drilling is committed to placing in the highest regard occupational health and safety during performance of the work.
- Super Drilling shall ensure all of its employees are aware of and obey all project site OH&S.
- Super Drilling will always ensure that all new employees attend project site induction courses before commencing any work on site.
- Super Drilling has all local staff trained in basic first aid.
- Super Drilling has adequate first aid kits on all operating machines and a basic kit in each vehicle. Stretchers will be on hand as necessary. All OHS&E incidents or accidents will be reported to site safety/medical coordinator immediately and the accident/incident report will be forwarded to the site management within 24 hours.
- Super Drilling will ensure that all work is undertaken in accordance with the environmental policy as well as with project site environmental policy.
- Super Drilling will ensure that all materials used are contained within the designated drilling machine and pad site, and within sumps or bunds. Oil/fuel and chemicals are to be stored according to the client's requirements in covered bounded areas, and spills are to be contained and cleaned up to a standard satisfactory to the client. Drainage to prevent soil erosion shall be maintained wherever possible, while complying with project plan, and waste will be collected and removed according to the client's instructions.
- Super Drilling shall not remove rock, soil or cut down and remove trees or other vegetation without first obtaining permission from the client. All scheduled plant maintenance and cleaning shall be carried out at the working site. Unscheduled maintenance or repairs on site will be carried out and cleaned up to the client's standard.

QUALITY POLICY AND OBJECTIVES

- Super Drilling is committed to total customer satisfaction by meeting all expectations.
 - Super Drilling will strive for continuous improvement in the process of achieving the ultimate quality product at the most competitive prices.
 - Super Drilling is bound to deliver reliable and quality products and services with good standards of customer care to all customers at all points in time.
 - Super Drilling is committed to comply with all requirements and continually improve the effectiveness of the Quality Management System as per ISO 9001:2008.
 - Super Drilling shall set new standards of corporate performance and supremacy through operational, environmental and financial excellence, responsible citizenship, and profitable growth.
3. To earn the trust and confidence of all customers.
 4. To work with enthusiasm, dedication and innovation, with total customer satisfaction as the ultimate goal and to consistently achieve high growth with the highest levels of productivity.
 5. To be a technology driven, efficient and financially sound organization.
 6. To be a responsible corporate that nurtures human values and concern for society, the environment and nation building.
 7. To promote a work culture that fosters individual growth, team spirit and creativity to overcome challenges and attain goals.
 8. To encourage ideas, talent and value systems.
 9. To uphold the guiding principles of trust, integrity and transparency in all aspects of interactions and dealings.
 10. To achieve excellence in service, quality, reliability, safety and customer care.

The quality objectives of Super Drilling are

1. To attain best practices and become a world-class service provider.
2. To provide excellent, reliable and quality services to its customers.

ENLISTMENTS

The Company has been enlisted/pre-qualified/registered with the following major public/private sector enterprises to bid for contracts.

- Delhi Metro Rail Corporation
- I&PH, Himachal Pradesh
- Delhi Jal Board
- TCIL
- PHED, Haryana

OFFICES

806 Chiranjiv Tower, Nehru Place,
New Delhi, India 110019

Phone +91 9810164103, +91 9810089141, +91 11 2646 0155

Fax +91 11 26476089

Email: sales@superdrilling.com, sdplservices@gmail.com

Website: www.superdrilling.com